

National Series 300B Booms and Jibs

Boom and Jib Combinations

328B: 12½' to 28' three section



337B: 15½' to 37' three section



337B: 15½' to 37' three section

3FJ15: 15' straight



346B: 18½' to 46' three section

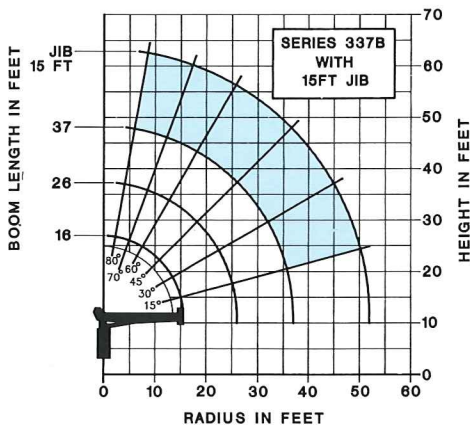


346B Capacity* (without jib) (Metric equivalents shown in parentheses)

Radius	Boom Fully Retracted 19' (5.8m)	Boom 28' (8.5m) Extended	Boom 37' (11.3m) Extended	Boom 46' (14m) Extended
4' (1.2m)	16,000 lbs. (7,258kg.)			
6' (1.8m)	9,200 lbs. (4,173kg.)	8,400 lbs. (3,810kg.)		
8' (2.4m)	7,100 lbs. (3,221kg.)	6,650 lbs. (3,016kg.)	5,900 lbs. (2,676kg.)	
10' (3.0m)	6,150 lbs. (2,790kg.)	5,300 lbs. (2,404kg.)	4,950 lbs. (2,245kg.)	4,600 lbs. (2,087kg.)
12' (3.7m)	5,100 lbs. (2,313kg.)	4,400 lbs. (1,996kg.)	4,200 lbs. (1,905kg.)	3,800 lbs. (1,724kg.)
14' (4.3m)	4,600 lbs. (2,087kg.)	3,800 lbs. (1,724kg.)	3,600 lbs. (1,633kg.)	3,400 lbs. (1,542kg.)
16' (4.9m)	3,800 lbs. (1,724kg.)	3,400 lbs. (1,542kg.)	3,100 lbs. (1,406kg.)	2,900 lbs. (1,315kg.)
18' (5.5m)	3,400 lbs. (1,542kg.)	3,050 lbs. (1,383kg.)	2,750 lbs. (1,247kg.)	2,550 lbs. (1,157kg.)
20' (6.1m)		2,750 lbs. (1,247kg.)	2,500 lbs. (1,134kg.)	2,250 lbs. (1,021kg.)
25' (7.6m)		2,100 lbs. (953kg.)	2,000 lbs. (907kg.)	1,900 lbs. (862kg.)
30' (9.1m)			1,600 lbs. (726kg.)	1,450 lbs. (658kg.)
35' (10.7m)			1,250 lbs. (567kg.)	1,250 lbs. (567kg.)
40' (12.2m)				1,050 lbs. (476kg.)
45' (13.7m)				750 lbs. (340kg.)

* Capacities shown are for the 346B with the load suspended, radius is for loaded boom. Capacities vary for cranes equipped with jibs or attachments. The capacities shown will be reduced when accessories are attached to the boom or loadline. Consult factory for specific load rating information.

Note: Rated loads do not exceed 85% of the tipping load. The structural strength ratings in the chart above are shaded.



LOAD RATINGS								
LOAD RADIUS (FEET)	LOADED BOOM ANGLE	16 FT BOOM (LBS)	LOADED BOOM ANGLE	26 FT BOOM (LBS)	LOADED BOOM ANGLE	37 FT BOOM (LBS)	LOADED BOOM ANGLE	15 FT JIB (LBS)
4	79°	16,000					80°	3,000
6	70°	10,200	78°	8,950			70°	1,900
8	62°	8,200	74°	7,050	80°	6,400	60°	1,400
10	53°	6,600	69°	5,850	76°	5,300	45°	1,000
12	42°	5,700	65°	5,050	73°	4,500	30°	700
14	27°	5,000	59°	4,350	70°	4,000	15°	600
16			54°	3,900	66°	3,400		
18			47°	3,500	64°	3,100		
20			43°	3,150	60°	2,900		
25			19°	2,350	50°	2,400		
30					39°	1,900		
35					21°	1,500		

Do not operate cranes or accessories within 10 feet of live power lines.

1. Load ratings shown on these charts are maximum allowable loads with the outriggers properly extended on a firm, level surface and the crane leveled

and mounted in a factory-recommended configuration.
2. Always level the crane with the level indicator on the crane frame.
3. The operator must reduce loads to allow for such factors as wind, ground conditions, operating speeds and the effect of freely suspended loads.

4. Overloading the crane may cause structural collapse or instability.
5. Weights of any accessories attached to the boom or loadline must be deducted from the load chart capacities.
6. Do not exceed jib capacities at any reduced boom length.

The capacities shown will be reduced when accessories are attached to the boom or loadline.