

# SERCO 1050XR



## GENERAL SPECIFICATIONS (SERCO 1050XR)

### LIFT CAPACITY

- 10,583 lbs. @ 10' radius (less weight of attachment).

### BOOM REACH

- 22' fixed length boom standard. Fixed length and telescoping booms available to 28'.

### ROTATION

- Continuous on double-row turntable bearing.

### WEIGHT

- 7,800 lbs. (including oil & continuous grapple).

## STANDARD FEATURES

### MAIN AND SECONDARY BOOMS

- Fabricated from light weight, high strength, steel plate and reinforced at all stress points.

### BOOM CYLINDERS

- Double acting with ductile iron pistons and glands with wear rings and chrome plated shafts. Main lift cylinder 6" x 36" x 3". Secondary boom cylinder 5" x 35-1/2" x 2-1/2".

### BOOM PIVOT PINS

- 2-1/2" diameter made from 100,000 PSI yield chrome plated shafting.

### BOOM PIVOT BUSHINGS

- Aluminum bronze bushings at boom pivot points.

**MODELS RANGING UP TO 37,000 LBS.  
LIFT CAPACITY**

SPECIFICATIONS SUBJECT TO CHANGE  
WITHOUT PRIOR NOTICE

### SWING SYSTEM

- Hydraulic motor powered planetary gearbox driving external tooth turntable bearing.
- Crossover relief valve for swing motor protection.

### STABILIZERS

- Telescoping A-frame type with 117-3/4" spread at grade level individually controlled from operator's seat for adjustment on uneven terrain.
- Double acting 3-1/2" x 44" x 2" cylinders.

### HYDRAULIC SYSTEM

- Tandem hydraulic circuits to allow simultaneous operation.
- Tandem gear pump providing 30 & 30 GPM at 1400 pump RPM.
- Stack type control valve located under seat for increased operator visibility and safety. Including necessary relief and anti-cavitation valves for machine protection.
- 55 gallon hydraulic reservoir with high capacity, 10-micron return line filter.
- Folding joystick controls standard. 4-wire reinforced hoses in all pressure applications.
- SERCO hydraulic manifold with ductile iron center spool & chrome plated housing for continuous swing rotation.

### MISCELLANEOUS

- 3-Point greasing system for turntable bearing and pinion gear.
- Mechanical swing lock for safety during transit
- Dual heavy duty ladders.

### OPTIONS

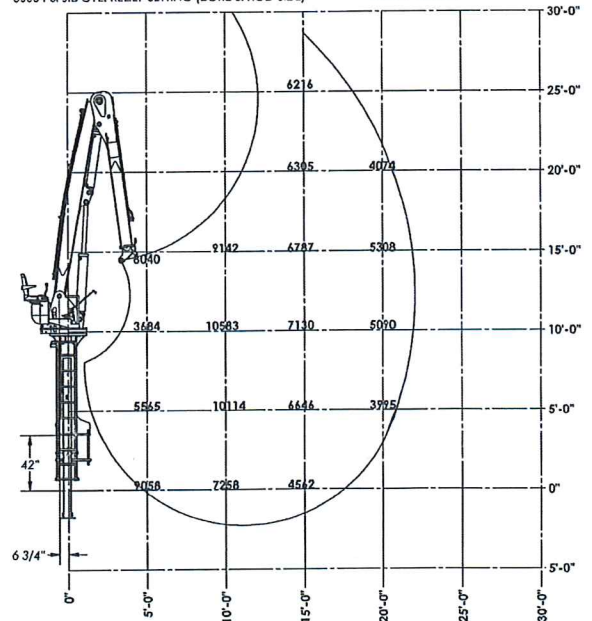
- Telescoping jib boom with separate valve and foot control.
- Light kits.
- Full range of attachments including continuous rotation grapples.
- Side mounted steel or aluminum tank built to SERCO specs.
- Hydraulic Oil Coolers
- Bolt-on Cylinders

### 040709- SERCO 1050XR 22' SQUIRT- RANGE/LIFT DIAGRAM

CAPACITIES SHOWN ARE MAXIMUM THEORETICAL LIFT CAPACITIES (LESS ATTACHMENT) BASED ON LOADER SYSTEM PRESSURE INDICATED. LOADERS IS MOUNTED ON ADEQUATELY SPEC'D VEHICLE. STABILIZERS DEPLOYED IN DOWN POSITION AND THE ENTIRE UNIT IS ON FIRM, LEVEL GROUND. IT IS HIGHLY RECOMMENDED THAT PRIOR TO INSTALLATION OF THIS LOADER ONTO TRUCK THAT A STABILITY CALCULATION OR TEST BE PERFORMED TO ENSURE PROPER STABILITY AND OPERATION OF LOADER ON CUSTOMER VEHICLE.

2500 PSI MAIN CYL. OPERATING PRESSURE  
2500 PSI MAIN CYL. RELIEF SETTING  
2500 PSI JIB CYL. OPERATING PRESSURE  
3000 PSI JIB CYL. RELIEF SETTING (BORE & ROD SIDE)

5010810 - MAIN BOOM(12')  
3002756 - JIB BOOM(10')  
3002834 - BOOM CYL  
021191 - JIB CYL



# SERCO LOADERS

511 25th Ave.  
Two Harbors, MN 55616  
Phone: (218) 834-5118  
FAX: (218) 834-2498

Email: [serco@sercoloaders.com](mailto:serco@sercoloaders.com)  
Web: [www.sercoloaders.com](http://www.sercoloaders.com)



PRINTED IN USA